

ROCKCLIFFE PARK RESIDENTS ASSOCIATION

ANNUAL REPORT FOR THE YEAR 2008



Joint Annual Meeting of the RPRA

&

The Village Foundation

Wednesday April 22, 2009 at 7:30 p.m.
Community Hall, 380 Springfield Road

TABLE OF CONTENTS

| | |
|--|--------|
| 1. President’s Report | 2 |
| 2. Planning and Legal Issues | 3 |
| Heritage and Site Plan Committee | 3 |
| Committee of Adjustment | 4 |
| 3. Treasurer’s Report | 5 |
| Communications | 6 |
| Sports and Recreation | 6 |
| Environment | 6 |
| Heritage | 6 |
| 4. Membership | 7 |
| 5. Community Events and Reports | 7 |
| Speakers Program | 7 |
| Rockcliffe Revisited | 8 |
| Tree Lighting and Carol-Sing Ceremony | 9 |
| Community Garage Sale (Trash Bash) | 10 |
| Soccer Program | 10 |
| 6. Environment | 12 |
| Street Tree Planting | 12 |
| Pond Water Quality Monitoring and Reporting | 12 |
| Green Partnership Program (GPP) Grant | 12 |
| By correspondence: Ann Kelly, Patricia Logrippo, Jane Panet, James C. Taylor. . | 14 |
| Village Gardening | 15 |
| 7. Communications | 16 |
| Newsletter | 16 |
| Website | 17 |
| 8. Liaison with the Federation of Citizens’ Associations of Ottawa-Carleton | 17 |
| 9. Ottawa Police Service – Rockcliffe Park Community Police Centre | 18 |
| Neighbourhood Watch | 19 |
| 10. Rockcliffe Park Public Library | 19 |
| Appendix A: RPRA Financial Statements | 21 |
| Budget 2008 / 2007 | 21 |

1. President's Report

Once again your directors have kept very busy addressing the many issues that arose during the past year, some anticipated, some not.

One of the major issues that has taken much of the time and attention of a number of the directors as well as concerned residents has been the controversial proposed new east end bridge crossing over the Ottawa River at one location in particular, the so called Option 5 (Kettle Island crossing) which had been recommended by the consultants hired by the NCC.

There has been so much publicity given to this issue in the popular press as well by local television and radio that I expect virtually all Rockcliffe Park residents are familiar with same. Needless to say, it has been the view of your Board that locating a new east end bridge at Kettle Island was unacceptable for many reasons including the proximity of established residential communities and the Montfort Hospital, among others, to the proposed use of the Aviation Parkway linking with the new bridge as the Ontario access route for heavy trucks diverted from King Edward Ave. and the MacDonald Cartier Bridge to cross over the Ottawa River en route to and from Quebec.

A number of your directors and other residents both in the Village and affected communities fought long and hard to cause the NCC to look at other alternatives such as the Gatineau Airport crossing (option 7) which would be located further to the east and away from built up areas.

Thankfully we were joined and supported in our fight by our elected representatives at all three levels, namely: Hon Mauril Belanger, MP, Madeleine Meilleur, MPP and Jacques Legendre, Ward Councillor.

In result the Board of the NCC voted to enlarge the so-called Phase 2 study of the proposed east end river crossing to include option 6 (Lower Duck Island), and option 7 (Gatineau Airport).

Notwithstanding this temporary victory it is anticipated that the issue of the location of the new east end bridge will remain on the table for at least another year.

On another subject, the future of the residence at 456 Lansdowne N remains to be decided by the OMB with a hearing scheduled for the week of March 16.

By the time this Report is published the hearing will be completed and the decision may have been delivered. Your President, with the assistance of Iola Price, our VP, and with Martha Edmond as our expert historical witness, will have made the case for the Village that the house is an historic and heritage landmark in the Village and should be preserved.

The issue involving the new boys' residence at Ashbury College has been resolved. While we were not able to save two of the heritage homes we did persuade

Ashbury to "flip" the residence. Anyone passing by the site can observe the construction in progress. When completed there will be a large area at the intersection of Springfield and Maple Lane that will be landscaped in keeping with the Village tradition of shrubbery and trees rather than brick walls and windows.

The Village Foundation continues to fund a number of Village activities including replanting of trees, sports programs and heritage projects.

Once again the Village continues to be an active community with its many volunteers. Of particular note are the residents who participate on the various subcommittees as well as those who make possible the annual Trash Bash, Spring Barbecue, Children's Xmas party, tree lighting, used book sale and the like.

The Rockcliffe News continues to be published thanks to our editor, Julia Beatty, and the volunteers who distribute the News throughout the Village in good and poor weather.

As in the past our Councillor Jacques Legendre, continues to attend Board meetings whenever possible as well as defending the interests of the Village at City Council.

Finally, to all those residents of the Village who have contributed their time and talents in various capacities without thought of reward, our grateful thanks. The result is a community which is thriving and a wonderful place to bring up a family or simply to live surrounded by a great environment. Let's now hope for an early spring!

Prepared by Alexander Macklin

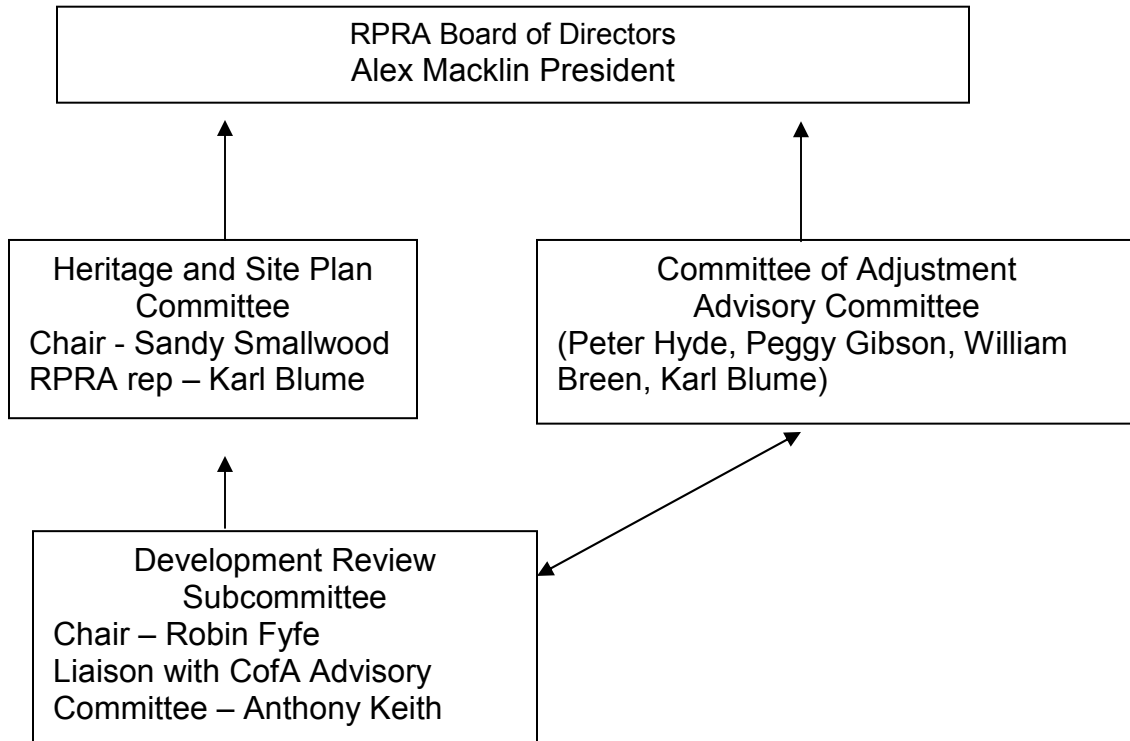
2. Planning and Legal Issues

Heritage and Site Plan Committee

The Heritage and Site Plan Committee meets regularly throughout the year to deal with all heritage and site plan issues affecting the Village. New houses and major renovations are dealt with through the Development Review Subcommittee which provides advice to City staff on alterations to buildings, demolitions and new construction on the basis of the heritage district management guidelines.

This year saw the loss of two of the Village's older houses with the demolition by Ashbury Collage of two houses on Springfield Ave. for the construction of a new boys' dormitory.

RPRA Board of Directors and Heritage-Development -- committee relationships



Prepared by Sandy Smallwood

Committee members: Karl Blume, John Cook, Linda Dicaire, Martha Edmond, Robin Fyfe, Margaret Gerard, Anthony Keith, Polly King, Joan Kingstone, Vic Lanctis, Robert McElligott, Meryl Oliver, Diana Rowley, Sandy Smallwood (Chair), Herbert Stovel, James C. Taylor, J. H. (Si) Taylor

Committee of Adjustment

Ottawa’s Committee of Adjustment hears applications from property owners that want to make changes to their property that result in "minor" non-conformance with the Comprehensive Zoning Bylaw. It applies section 45 of *The Planning Act* when making its decisions. Interested parties, which include the City of Ottawa, the RPRA and neighbours of the proponent, make presentations either pro or con to the Committee of Adjustment. Decisions of the Committee of Adjustment may be appealed to the Ontario Municipal Board

Rockcliffe Park’s Committee of Adjustment Advisory Committee (CAAC) operates under a mandate from the RPRA and formally represents it at hearings of the Committee of Adjustment.

We meet as required upon receipt of notice for "minor" variance requests being received by the RPRA. Our practice is to review documents, investigate and discuss with the neighbours to find out if there are reasons to object, and to meet with the proponents/owners to reach an accommodation.

We are guided by the Management Guidelines for the Heritage District of Rockcliffe Park and the zoning by-law in efforts to negotiate with the proponents /owners to reach an accommodation regarding the degree of variance that is necessary.

We are constantly faced with development plans which seek the largest possible structure for a particular lot without regard to setbacks. Our efforts are made to determine how a structure will impact the neighbours and the green spaces which are so essential to the character of Rockcliffe and which are the foundations of our Heritage designation.

We are concerned as well, whether approval of plans would set a precedent for future applications for minor variances. There have been approximately a dozen such applications during the past year and we have made submissions to the Committee of Adjustment in more than half of the cases with some limited success. Usually our input is well received and modifications to the plans and drawings often result. We appeared as a witness at one OMB hearing, representing the immediate neighbours, but the decision rendered favoured the applicants. However, after due consideration, the applicants chose not to proceed to the full extent of the award.

We believe that if architects, real estate agents, builders and new residents were more aware of the Heritage aspect and the benefits it provides the residents, before embarking on a project, time and money would be saved and the unique character of the neighbourhood could be preserved. Furthermore, the new residents could live in harmony with their neighbours for the ultimate benefit of everyone.

Prepared by Peter Hyde and Karl Blume

Committee Members: Karl Blume, William Breen, Peggy Gibson, Peter Hyde with Anthony Keith as a liaison from the Development Review Subcommittee of the Heritage and Site Plan Committee of the RPRA.

3. Treasurer's Report

The role of Treasurer is primarily one of managing the funds of the Rockcliffe Park Residents Association and maintenance of the appropriate records. This role involves the receipt and banking of revenues, the payment of expenses associated with approved activities, monthly reconciliation of the bank account and attendance at the monthly meetings of the Association.

The main financial activities of the Association are as follows:

Communications

- printing and delivery of the Rockcliffe Park newsletter
- printing and distribution of the Annual Report
- providing a forum for topics of interest to the Village (e.g. Mayoral debate)
- printing and distribution of Welcome to Rockcliffe Park Booklet

Sports and Recreation

- soccer field and rink maintenance
- speakers' series
- summer BBQ
- children's Christmas party
- Christmas tree lighting ceremony

Environment

- tree planting and mulching
- Pond water testing
- Village clean-up
- Jubilee Garden summer plantings

Heritage

We would like to take this opportunity to thank The Friends of the Village of Rockcliffe Park Foundation for their most generous grant of \$14,600 for 2008. Without these funds, we would not be able to undertake the many diverse projects that make our village unique.

We would also like to thank Historic Ottawa Developments Inc. for providing bridge financing to assist with the completion of the Birkenfels Gate installation.

Financial Statements for the year 2008 are attached as Appendix A to this report.

Prepared by José Miguel Peleato

4. Membership

Membership in the Rockcliffe Park Residents Association provides critical support for the Association's work on behalf of Village residents and as Rockcliffe's voice at City Hall. We encourage every resident to become a member of the RPRA each year. The membership dues help pay for the Newsletter and our popular social events.

In 2008, 257 households representing about one-third of the 788 households of the Village joined as members of the Residents Association. This is a decrease of 13 households in comparison to 2007 and reflects, in part, an increase in the number of vacant homes. As well, our diplomatic neighbours tend not to join the association. Nevertheless, our membership rate is much better than some of Ottawa's other residents/community associations but still, we would like to see an even higher percentage of residents joining the association in 2009.

Our 34 Non-resident members receive the RPRA newsletter and enjoy attending events such as the Speaker Program and other community events.

Prepared by Iola Price

5. Community Events and Reports

Speakers Program

2008 marked the eighth year of the Speakers Program. We again attracted outstanding individuals to the Community Hall to share their views with residents of the Village and neighbouring communities.

The Ambassador of Israel, Alan Baker, and the Ambassador of Jordan, Nabil Barto, together spoke to a packed hall about the very real benefits that peaceful relations, if given a chance, can bring to the Middle East. Derek Burney, aided by some wonderful photos, described what the Manley Panel discovered in their time in Afghanistan, and outlined the thinking that went into the "Manley Report". Former Minister of External Affairs, Flora MacDonald, captivated her lunch audience with what she called "Another view of Afghanistan".

Rockcliffe resident Barry McLoughlin shared his long experience with leaders of the country in his talk on "communicating with power". Just before the historic November election in the United States, David Wilkins, the Ambassador of the United States, gave a gracious talk about his time in Canada and the relations between our two countries.

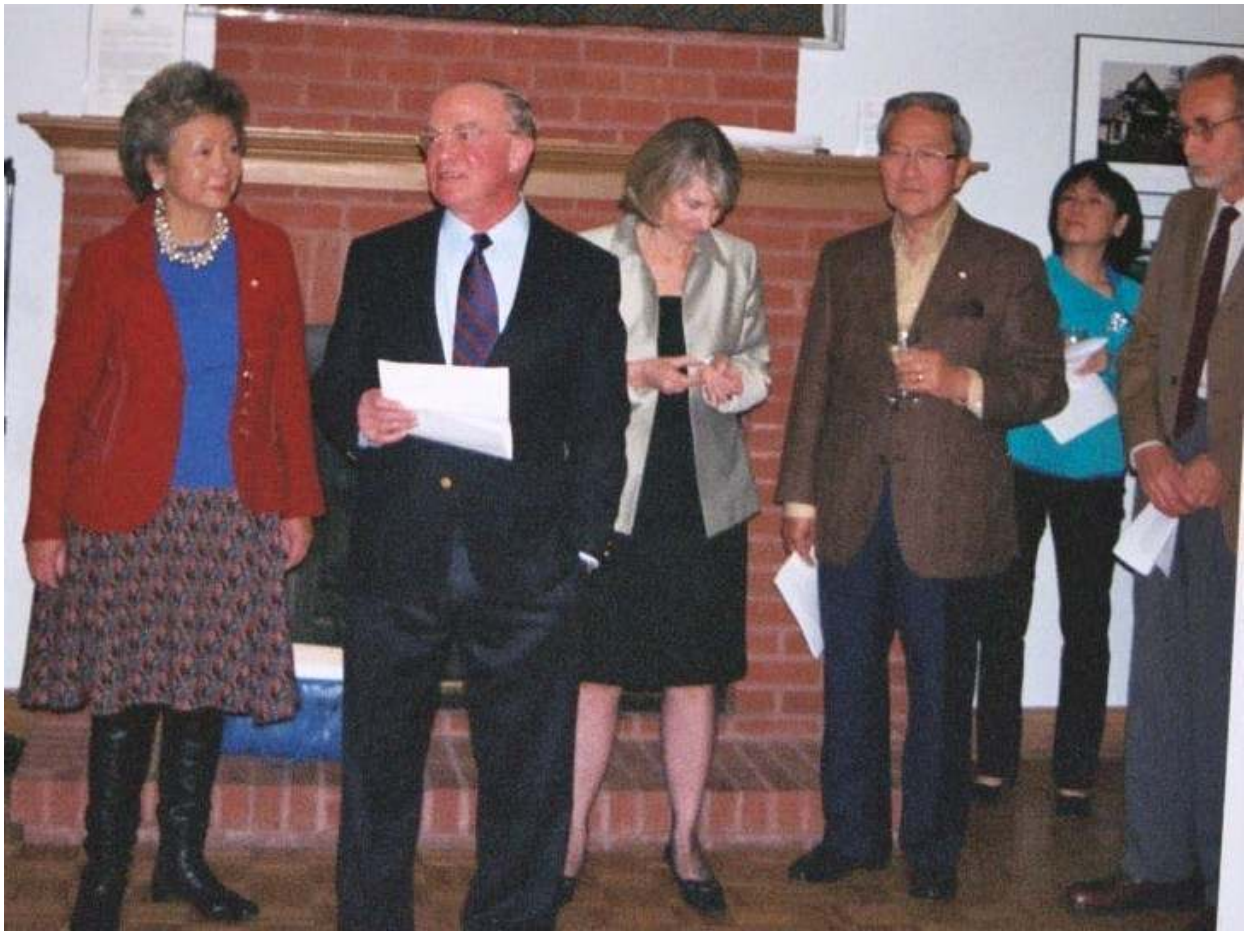
To end the year, Andrew Cohen joined us again, this time to paint a fascinating picture from his new book about the life of Lester B. Pearson.

Prepared by Susan d'Aquino

Rockcliffe Revisited

The RPRA sponsored an exhibit of photos *Rockcliffe Revisited: The Fine Art Photography of Neville Poy* taken by Dr. Poy as part of the project to publish Martha Edmond's *Rockcliffe Park: A History of the Village*. Martha Edmond curated the exhibit of photos, many of them previously unseen in the Village.

The exhibit opened Friday October 24 with a special showing at which Dr. Poy and his sister, the Rt. Honourable Adrienne Clarkson were among the many guests. The invited guests, including owners of the homes featured in the exhibit, enjoyed the opportunity to see photographs of Rockcliffe's oldest house, Crichton Lodge (residence of the Norwegian ambassador), as well as views of McKay Lake, the Rockeries, Beechwood Cemetery, and a number of notable residences throughout the Village. The exhibit of about 70 home exterior and interior photos was open to the public the following Saturday and Sunday and then moved to the Crichton Cultural Community Centre for a further week of viewing.



Pictured in the photo from left to right are: Rt. Hon Adrienne Clarkson, Brian Dickson, Martha Edmond, Dr. Neville Poy, Clara Wong and Anthony Keith

During the speeches, Dr. Poy reminisced about his childhood in Ottawa and his dramatic arrival in Canada from Hong Kong during the Second World War with his sister and parents. A highlight of the evening was the presentation to Madame Clarkson of a portrait of her, taken by Dr. Poy at Rideau Hall in 2000 when she was Governor General. Dr. Poy kindly made the photos available to the RPRA for sale as a fundraiser to assist with its on-going community work in the Village. Selected photographs from the exhibit are still available for sale, and can be viewed at the website: www.rockcliffepark.ca. Prices range from \$125 to \$200.

Many residents took the opportunity to purchase a photo of their home. The RPRA thanks the event sponsors: Jane Davis of Faulkner Real Estate, Epicuria, Jacobsen's Fine Foods and John Wallack of Wallack's Galleries for their support of this event that showcased Rockcliffe's fine built heritage.

Prepared by Martha Edmond

Tree Lighting and Carol-Sing Ceremony

On December 12th the RPRA held the annual Tree Lighting and Carol-Sing Ceremony. The Citadel Band of the Salvation Army led the carollers' and the Fern Hill School Choir treated Villagers to a choral performance. Elizabeth Milligan, school principal, conducted the choir as the Community Christmas Tree's new LED lights were switched on.

Those at this well attended event enjoyed Christmas cookies, hot chocolate, and hot cider. Donations to the Shepherds of Good Hope were also collected and the RPRA provided a cash donation to the Salvation Army to assist them in their good works in Ottawa. It was great to start the Christmas season on a mild, snowy night with friends and neighbours.

Thanks to Melanie Harmon for all her hard work and enthusiasm for making the evening so enjoyable.

Prepared by Deborah Seaborn

Community Garage Sale (Trash Bash)

On 7 June, the RPRA organised the annual community garage sale held in the parking lot behind the community centre.

20 tables were rented to village residents who sold their wares (furniture, appliances, jewellery, clothing, and assorted items) to passers by and soccer families for the better part of a sunny June day. A total of \$440 was raised for the RPRA in the rental of tables. The RPPS Grade Six class ran a bake sale and raised \$250 which was used to fund crossing guards, and to pay for graduation events.

Please watch the RPRA website for the date of the 2009 Trash Bash!

Prepared by Wendy Hadwen

Soccer Program

The Rockcliffe Park Lindenlea House League Soccer Program had another very successful year and continues to receive strong support from a committed group of volunteers and parents in the community. In 2008, we reached a record high of 263 children registered in the RPL Soccer League, playing on 20 teams in five different divisions from late April through late June. There was a noticeable surge in participation in the youngest group in 2008 – the Pee Wee Division – which reflects demographic trends in our neighbourhoods. The Pee Wee Division was once again split into two time slots (ages 4-5 played at 9:30am; 6-7 year olds played at 10:30am) and this allowed over 140 children to play soccer at the Rockcliffe Park Public School field on Saturday mornings. The Junior (ages 7-9), Intermediate (ages 9-11) and Senior (ages 11-14) divisions played at both the school and Hillsdale fields on Tuesday, Wednesday or Thursday evenings.

In 2008, the T shirts given to all registrants had an updated look thanks to a new RPL logo and design created by Daniel Hanson. The players, coaches and referees also appreciated each receiving a free reusable water bottle courtesy of Charles Sezlik. In the Pee Wee and Junior Divisions, all players ended their season with a Fun Day, pizza party and personally engraved participation medals for each player. The Senior Division joined forces with the Manor Park League to play regular weekly games, sharing referees and alternating fields. The four Intermediate Division teams and the Senior RPL teams also participated in end-of-season tournaments, capping off the session with a pizza finale and gold, silver or bronze medals for all participants.

With the increase in enrolment in our own RPL League matched by similar increases in other community and club soccer programs, there is a city-wide shortage of well maintained soccer fields. After determining that alternate neighbouring soccer pitches (Stanley Park and Ashbury's playing field) were not available, the RPL League once again used a portion of the funds from registration fees to improve the playing conditions of the Hillsdale or Rockeries field. In past years this field was very uneven with many potholes (many ankles have been twisted or worse) and the field is often wet. Peter Lewis and Jim Harmon arranged a contract with Heritage Landscape Design to level the soccer pitch area in the spring and fill in some of the holes which helped immensely. In addition, the RPL League paid All Sports Contracting to mark the soccer pitch boundaries at both the Rockeries soccer pitch and the RPPS School field on a weekly basis over the 10 week season. The opening of the season was delayed by one week last year due to the unusually wet field conditions of last spring.

A huge thank you goes out to all the volunteers that helped make 2008 a successful season, particularly the 36 coaches and eight referees who dedicated many hours to ensuring the kids had wonderful team spirit and lots of fun. Our RPL Soccer Program has been a great community building success primarily due to the partnership between the Lindenlea Community Association (LCA) and the RPRA in organizing the league. We are grateful that the LCA handles the registration portion of the program and thank Valerie Devine-Egan, LCA General Manager in particular. Volunteers from Rockcliffe Park, Lindenlea, New Edinburgh and even some from Manor Park together contributed an estimated 2000 volunteer hours to making the RPL Soccer Program such a great community sports program. In particular, the main organizing committee of Joy Chow, Dan Gent, Caryn Kewell, Alexandra Wood and Julie Vanderschot devoted much time and energy to RPL Soccer this past year.

The RPRA and the LCA are grateful that Rebecca Gwyn, a resident of Lindenlea, has agreed to take on the role of RPL League Convener for the 2009 season. She will be assisted by parent volunteers who together will be responsible for registration, coach and referee recruitment, team formation, game scheduling, allocating/purchasing equipment and supplies, and organizing end-of-season tournaments and family fun days.

Prepared by Julie Vanderschot

Committee members: Di Bethune, Barbara Burke, Jane Dobell, Caryn Kewell, Jill Moll, Sheila Nelles, Fran O'Brien, Susan Shenstone, Julie Stephens, Ellen Zeiss

6. Environment

Street Tree Planting

We took a break from street tree planting in favour of running a community tree distribution as part of Ottawa's Trees for Tomorrow Program. On May 10, 12 Rockcliffe residents joined close to 300 neighbours from Lindenlea, Vanier, New Edinburgh and Manor Park in choosing a tree from among the 10 species set out in the Library and Community Hall parking lot. The Trees for Tomorrow program provides smaller trees for residents to plant themselves in their yards or in a public space.

The Rideau Valley Conservation Authority continued its work on the endangered butternut by returning to Rockcliffe's canker-free butternut tree to take further leaf samples to determine whether or not it is a hybrid or "pure" butternut.

Pond Water Quality Monitoring and Reporting

We continued to have the Pond Water analysed for nutrients and, as in the past, the City's Health Unit analysed the water for *E. coli* every two weeks.

The water was safe for swimming throughout the summer. Levels of Nitrogen and Phosphorus have remained about the same over the past six years although there are mid-season fluctuations in Nitrogen that cause us some concern. We believe that these spikes are caused by the use of lawn fertilizers in the vicinity of the Pond. Under current conditions, green algae and rooted aquatic weeds will dominate. Should conditions change and the water become more eutrophic, our worry is that there will be an outbreak of toxic blue-green algae, requiring a no-swimming order.

Some species of blue-green algae have been identified as present in the pond and that is normal and of no concern as long as the numbers remain low.

There was no supervision provided by the City this summer, however, most swimmers self-policed the 2:00 p.m. curfew. There were 10 calls to the Police and 17 to Bylaw Services about rowdy behaviour and swimming after 2 pm. For 2009, residents living around the Pond are encouraged to call 311 to report swimming and rowdy behaviour after hours rather than approaching the swimmers and asking them to leave. Only then will there be good data to gauge the level of the problem.

Green Partnership Program (GPP) Grant

The Environment Committee partnered with the Fletcher Wildlife Garden (FWG) of the Ottawa Field-Naturalists' Club and we were awarded a \$9,975 grant to remove invasive species at the FWG, McKay Lake and at our Library and Community Hall on

Springfield Road. We are grateful to David Pigott who donated his time and the use of his mini bulldozer to move aside the boulders in front of the Library and Community Hall. He pulled out an accumulation of weeds, shrubs and invasive trees growing among the boulders and then reset them in a new line.



380 Springfield – before cleanup



380 Springfield after cleanup of boulder line



David Pigott Volunteer Extraordinaire and his “toy” removing invasive shrubs from the line of boulders at the Library and Community Hall



Jubilee Garden – the former Carnegie Library pediments can now be seen after overgrown Mugho Pines were removed.

The site now looks as it did many years ago. We used our part of our GPP grant to hire a local arborist and his energetic crew to chain saw and pull out by the roots the invasive Norway Maples along the Buena Vista side of the Community Hall up to the line of boulders. This has increased visibility into the Community Hall area (a great improvement from a public safety perspective) and will increase light so that flowers may eventually be planted there again (as was done in the mid 1990s but was not successful due to a lack of light). The arborist also chipped about a decade of accumulated bush and it is now available as mulch for use by the Village Gardeners. Commercial stump grinding in the wooded area in front of the Library and Community

Hall, the delivery of two loads of compost (at no charge to us) from the city for use by the Village Gardeners and the removal of the overgrown Mugho Pines in the Jubilee Garden completed the 2008 work on the project. The Mugho Pines will be replaced by low-growing shrubs in 2009.

There was additional commercial cutting and chipping of large buckthorn with berries along the Hillsdale side of McKay Lake and on the lake side of the fence on the east side of the lake for about half of the fence's length.

Thanks again to Anne Dale-Harris who walks the paths around McKay Lake picking up litter and generally keeping a watchful eye on the area.

Prepared by: Marilyn Blattel, Derek Chase, Wendy Hadwen, Lola Price

Village Clean Up

In 2008, the RPRA coordinated two clean up days: Spring (May 4th) and Fall (November 2nd). In both cases, participants from local schools including Fern Hill, St. Bridgid's, Ashbury, Elmwood and RPPS were joined by a dozen residents in fanning out across the village to collect a vast range of objects from needles to small appliances. In two years, we've never had a clean up that didn't yield a hubcap and lots of plastic. As always, 2008 collectors brought home several bags of recyclable material that was sorted and taken home for city pick up by the irrepressible and brave Lola Price. The many construction sites in the Village continue to generate and even attract litter and are prime starting points for the clean-up crews.

Please join us for this year's Spring clean up at the Community Hall at 10:00 on Sunday 26 April.

Prepared by Wendy Hadwen

Committee Members: Marilyn Blattel, Derek Chase, Jane Davis, Brian Dickson, Wendy Hadwen, Tudy McLaine, Louise Meyer, Lola Price Chair, Susan Shenstone, Britt Sjoestedt, Ismene Wood

By correspondence: Ann Kelly, Patricia Logrippo, Jane Panet, James C. Taylor.

Village Gardening

The Village Gardeners is a group of volunteers who look after the flower beds in Jubilee Garden and those on the western façade of the Community Hall. Funds for the purchase of flowers are provided within the Environment Program budget of the RPRA with additional funding from the Rockcliffe Garden Club.

Prior to the launch of its season in 2008, Village Gardeners filed an application under the Green Partnership Program of the City of Ottawa. The request was for the funding of new flower bed border ties to replace existing ones which were in poor condition. Even though the application was not granted a favourable response, the process had the effect of spurring the City to undertake the job of replacing the most damaged ties.

The activities of Village Gardeners are typically structured into three phases: Spring, Summer and Fall. The highlights and accomplishments are as follows.

Spring

Spring is the busiest time for our group. The beds are cleaned, the soil is worked and plantings are made. There are a few organizational steps involved but more importantly a lot of hard work. It seems that cigarette butts and broken glass are part of the list of chores.

At Jubilee Garden, we continued to introduce new perennials with a mind to providing continuous interest, while choosing plants which are easy to maintain and which do not have high watering needs. The bed at the north end of the garden, close to the children's park, was reworked to make it more attractive to the eyes of children. We have introduced three peonies in our "peony" bed and these were donated by Mary Pratte.

At the Community Hall, over and beyond the planting of annuals and perennials, Village Gardeners have brought some order to the bushes through extensive pruning. This was carried on to the bushes in front of the Community Police Station and the east and south facades of the Community Hall. They all benefited from a good clip. By the driveway to the Community Police, more native flower species were added to last year's plantings. A small flower bed is also maintained at the front of the Community Police office.

Some members of our group were involved in the removal of plants from the grounds of the Irish Embassy. We were invited to remove plants which would have been damaged by the construction. Plants were sold at the Plant Sale and some were used in our beds. A mature hydrangea bush was planted by the Pavilion in order to hide some of the utility panels.

Finally, two members undertook the planting of a small bed at the edge of Mariposa and Buchan which had been looking very sad. Their initiative and efforts were welcomed by many residents in the community.

Summer

July and August are maintenance months when a roster of volunteers is established to ensure that plants are deadheaded and watered. We have a few problems accessing water and hope to find solutions with city officials.

Fall

Our Fall activities mainly consist of readying the beds for winter and planting spring bulbs. Over 80 daffodil bulbs were planted in the treed area at the front of the Community Hall. This augments the 150 bulbs planted in earlier years. Tulip bulbs were also planted at the foot of the gates in Jubilee Garden. Feedback on the spring bulbs has been very positive.

Reflections on the Season

Village Gardeners brings together enthusiastic volunteers who bring good humor and their green and not-so-green thumbs to the task of improving our community's public facilities. Their help is appreciated by many. The recruiting of volunteers is critical to the continued efforts of Village Gardeners. Student volunteers have been recruited to assist with some chores. Greater efforts to recruit from the Garden Club will be made.

We cannot conclude this report without remembering the late Bill McGuffin who gave so much to this community and to the Village Gardeners.

We thank (** indicates volunteers from outside the Village*) our 2008 Volunteers *Andree Baxter, Jane Breen, *Nancy Colton, Marilyn Donoghue, Joan Foster-Jones, Margo Gualtieri, Liz Heatherington, Carol Henderson, Joan Kellet, Ann Kelly, Barbara Knapp, H  l  ne Lamontagne, Larissa Lippens, Jane Little, Lynn McGuffin, Fran O'Brien, *Sheila Perry, George Pickering, Donna Roberts, Elena Venables, Paula Yau
Thank you also to Jim Harmon for cutting the hedges at the Jubilee Garden!

Prepared by: H  l  ne Lamontagne

7. Communications

Newsletter

First, an extra big thank you to our Newsletter Editor Julia Beatty and our faithful cartoonist Hal Steacy for their efforts in 2008. This is your community news and Julia has been reporting this to you faithfully over many years.

The six newsletters were hand-delivered to all Rockcliffe residents by Village volunteers under the leadership of Iola Price.

Let's give a big thank you to the 2008 Newsletter Deliverers. Hats off to Marilyn Blattel, Lucie Bohac, Derek Chase, Allan Darling, Jane Davis, Brian Dickson, Jane Dobell, Margaret Douglas, Whitney Fox, Raquel Garbers Fisher, Chantal Gobeil, Alison Green, Margot Gualtieri, Wendy Hadwen, Melanie Harmon, Lynda Iwanoff, Anthony Keith, Joan Kingstone, Charles King, Lou Korte, Nick Leadbetter, June Lindsey, Alex Macklin, Kent Manderville, Louise Meyer, Claire Ouseley, José Miguel Peleato, Susan Shenstone, Mary Anne Smallwood, Mary Taylor, Si Taylor, Ismene Wood.

And to the spouses and dogs who often helped out or accompanied our intrepid newsletter deliverers – thanks to you too. The RPRA acknowledges all of your efforts, especially in those cold days of winter. You are helping to make a real difference in our community.

Prepared by Iola Price

Website

The RPRA web site at www.rockcliffepark.ca is available and contains information pertinent to the Village. If you wish to submit any articles or information of interest to the residents in general, please send them to the webmaster.

Finally in 2008, a new edition of the "Welcome to Rockcliffe Park" was distributed this past year all households in the Village. The RPRA thanks the five sponsors who generously donated, in equal parts, the funds to print the Welcome booklet: Christopher Barker, Jane Davis, Nancy O'Dea, The Village Foundation and Marilyn Wilson. Cynthia Baxter hand-addressed all the envelopes in which the booklets were mailed, first class, courtesy of the Village Foundation.

Prepared by Carmine Domenicucci

8. Liaison with the Federation of Citizens' Associations of Ottawa-Carleton

During 2008, the RPRA continued to be represented and to participate constructively at meetings of the Federation of Citizens' Associations of Ottawa-Carleton. Member associations share information about issues facing their communities and, when appropriate, take joint action. The Federation provides a window on priority community concerns, whether they are primarily of local interest or have application city-wide.

In the city-wide category, the FCA has recently discussed such issues as the review of the Official Plan, the Comprehensive Zoning By-law, the Transportation Master Plan, impacts of development and intensification on communities and Heritage Conservation Districts, the Ottawa City budget for 2009, property tax reform, the National Capital Commission's Land Use Master Plan, lawsuits against community groups and interprovincial crossing studies. In some circumstances, it may be possible to obtain FCA endorsement of a community position to give it greater weight and impact. It had been hoped to enlist the support of the FCA in opposition to the proposed bridge at Kettle Island but representatives of community associations further east reduced this initiative to its lowest common denominator, namely that heavy trucks should be removed from the King Edward corridor. On the other hand, at the RPRA's request and with the encouragement of Councillor Jacques Legendre, the FCA has under review the issue of a possible 40 km speed limit in residential areas throughout Ottawa..

Prepared by Brian Dickson

9. Ottawa Police Service – Rockcliffe Park Community Police Centre

Constable Tom Mosco is the officer in charge of the Rockcliffe Park Community Police Centre, at 360 Springfield Road. Office hours are Monday to Friday from 9 a.m. to 5 p.m. The focus of Community Police Centres is to deliver information pertaining to the Ottawa Police Service core programmes - Neighbourhood Watch, Child Print, Operation Identification, Home Security Inspections, and Business Crime Prevention. Volunteers are involved in outreach within the community and all these services are available to the public free of charge. Individuals may call the Centre at 613-236-1222, ext. 5915 for more information, to request a security audit of their home and property, and for assistance in engraving valuables for easy identification in case of theft.

The current roster of volunteers assigned to the Rockcliffe Centre is 12. An important part of volunteering with community police centres is to help facilitate communication between the Ottawa Police Service and the community. Volunteers are also visible at public events. For instance, since the Centre opened in 1997 Cst. Mosco and volunteers have been present at the summer Sunday Cycle on the Rockcliffe Parkway and, for the last three years, at the RCMP Stables Open House fundraiser for the Food Bank. We have also attended area schools to provide fingerprinting for hundreds of children under the Child Print programme.

More police volunteers are needed and you can find out more about giving your time in this way by phoning Cst. Mosco at the Police Centre or through our website at: OttawaPolice.ca.

Prepared by Alison Green

Neighbourhood Watch

The Rockcliffe Neighbourhood Watch was moderately active in 2008. There were two meetings of the block captains April 23, 2008 and October 8, 2008. Attendance at the meetings was low as criminal activity in the area was very low.

| Top 5 Calls Rockcliffe Park | 2007 | 2008 | %Change |
|--|-------------|-------------|----------------|
| ALARM FALSE | 145 | 150 | 3.45% |
| ADMIN ADMINISTRATIVE | 58 | 48 | -17.24% |
| TRAFFIC STOP | 27 | 30 | 11.11% |
| FALSE 911 CALL – NO EMERGENCY IDENTIFIED | 29 | 24 | -17.24% |
| SUSPICIOUS CIRCUMSTANCE(S) | 19 | 20 | 5.26% |

For further information on Neighbourhood Watch please contact the Rockcliffe Community Police Centre at (613) 236-1222, Extension 5915.

Prepared by Thomas Mosco, Constable

10. Rockcliffe Park Public Library

Although the library committee is under the RPRA for administrative purposes, it draws its membership from the larger geographic area which the Rockcliffe Park Branch of the Ottawa Public Library (OPL) serves. This includes New Edinburgh, Lindenlea, and part of Manor Park as well as Rockcliffe Park.

The two-day Book Sale in April 2008 organized by the committee in support of the public library branch made a profit of \$8,000. The committee also raises money all year from the ongoing sale of books from its three shelves located near the window on the side of the parking lot. The money is collected by the librarian at the desk who then gives it to the RPRA treasurer for the library committee's account. Di Bethune makes sure that interesting titles are always available at rock bottom prices. Next time you are in the library why not check it out?

The committee wishes to thank the Library staff who put up with the commotion caused by the problem of inadequate storage for the donated books and the many volunteers who work during the sale and throughout the year sorting and pricing donations. A special vote of thanks goes to Di Bethune whose knowledge of the second hand book market is invaluable and to Julie Stephens, the Co Chair of the committee, who plays the lead role in organizing the pricing sessions and inspiring the volunteers.

As in previous years the committee took the advice of Philip Robert, the Supervising Librarian, and donated money to support magazine subscriptions, children's programs (visiting authors) and both the adult non-fiction and children's collection. It also supported an increase in the Adult Express Reads collection.

In addition the library committee supported an outreach program at the St. Laurent Branch for clients of St. Mary's Home. The committee also made a donation to the Friends of the Ottawa Public Library.

As usual, some members of the library committee keep close watch on the support for the OPL – or the lack of it – at City Hall. An attempt is made to work cooperatively with other community groups across the city to support the budget of the OPL.

The circulation figures at the Rockcliffe Branch continue at a high level. Elementary school children participated in class visits to the library which were ably handled in both English and French by the staff and, on occasion, invited authors. Rockcliffe Public Library Branch has an efficient cost per use. This is in part due to the number of volunteers who work under the supervision of the library staff.

The 2009 Book Sale will be held April 4th and 5th in the Community Hall. Your donation of books and other materials enables us to enhance the local library service.

Prepared by Jane Dobell

Committee members: Barbara and Jim Barker, Di Bethune, Barbara Burke, Jane Dobell, Joan and Tony Kellett, Caryn Kewell, Bill and D. Macklem, Jill Moll, Sheila Nelles, Fran O'Brien, Susan Shenstone, Julie Stephens, Ellen Zeiss.

Appendix A: RPRA Financial Statements

Budget 2008 / 2007

Rockcliffe Park Residents Association

Financial Position, December 31 2008

| | <u>2008</u> | <u>2007</u> |
|---|-------------|-------------|
| <u>Assets</u> | | |
| Cash | \$ - | - |
| Accounts Receivable | 4,950 | 3,000 |
| Bank Accounts | 67,696 | 69,931 |
| | ----- | ----- |
| | 72,646 | 72,391 |
| | ===== | ===== |
| | | |
| <u>Liabilities and Members' Net Assets</u> | | |
| Bank Indebtedness | \$ - | 3,830 |
| Accounts Payable | 11,170 | - |
| Current Portion Loan Payable (Birkenfels Gates) | 5,000 | 5,000 |
| | ----- | ----- |
| | 16,170 | 9,068 |
| | ----- | ----- |
| | | |
| Loan Payable (Birkenfels Gates) | - | 5,000 |
| Funds Held in Trust (Rink) | 20,000 | 20,000 |
| | ----- | ----- |
| | 20,000 | 25,000 |
| | ----- | ----- |
| | | |
| <u>Net Assets</u> | | |
| Restricted Funds (Library) | 2,423 | 743 |
| Unrestricted Funds | 34,053 | 37,827 |
| | ----- | ----- |
| | 36,476 | 38,561 |
| | ----- | ----- |
| | ----- | ----- |
| | \$72,646 | \$72,391 |
| | ===== | ===== |

Rockcliffe Park Residents Association

December 31 2008

Net Assets

| | <u>Library</u> | <u>Unrestricted</u> | <u>Total 2008</u> | <u>Total 2007</u> |
|------------------------|----------------|---------------------|-------------------|-------------------|
| Net Assets – Beginning | \$ 734 | 37,827 | 38,561 | 37,676 |
| Excess (Shortfall) | 1,689 | (3774) | (2,085) | 885 |
| Net Assets – Ending | \$ 2423 | 34,053 | 36,476 | 38,561 |

=====

Notes

Accounts Payable

| | |
|------------------------------------|--------|
| Children’s Christmas Party | \$ 923 |
| Rockcliffe Revisited Photo Exhibit | 10,247 |
| | ----- |
| Total | 11,170 |

Accounts Receivable

| | |
|-------------------------------|----------|
| Children’s Christmas Party | \$ 1,200 |
| Lindenlea Soccer Contribution | 3,750 |
| | ----- |
| Total | 4,950 |

Rockcliffe Park Residents Association**Library Account****December 31 2008**

| | | |
|--------------------------|----------|-------------|
| Balance December 2008 | | \$ 734.25 |
| 2008 Book Sale Revenue | | 9,580.93 |
| 2008 Expense | | |
| Printing | 45.20 | |
| Rachna Gilmore | 525.00 | |
| Lysette Brochu | 250.00 | |
| OPL Foundation | 6,500.00 | |
| Meg Tilly | 300.00 | |
| Lacelle Signs | 271.12 | |
| Total Expense | | 7,891.40 |
| Balance December 31 2008 | | \$ 2,423.78 |

Rockcliffe Park Residents Association

Income Details

December 31 2008

| | 2008 | 2007 |
|------------------------------------|------------------|------------------|
| INCOME | 71,765.83 | 49,797.00 |
| RPRA Admin-General | 22,911.92 | |
| Bank Interest | 2,061.92 | |
| Memberships 2008 | 6,250.00 | |
| Village Foundation | 14,600.00 | |
| RPRA Environment | 9,995.13 | |
| GPP City Grant | 9,975.00 | |
| Miscellaneous | 20.13 | |
| RPRA Heritage | 5,710.35 | |
| Publications | 122.00 | |
| Rockcliffe Revisited Photo Exhibit | 3,560.00 | |
| Welcome To Rockcliffe Booklet | 2,028.35 | |
| RPRA Library Sales | 9,340.93 | |
| RPRA Social | 12,607.50 | |
| BBQ | 7,986.60 | |
| Speaker Program Evening | 245.20 | |
| Speaker Program Lunch | 2,540.00 | |
| T-Shirts | 200.00 | |
| Trash Bash | 435.70 | |
| Children's party | 1,200.00 | |
| RPRA Sports | 11,200.00 | |
| Rinks City Grant | 4,450.00 | |
| Soccer (Lindenlea, RPPS) | 6,750.00 | |

Rockcliffe Park Residents Association

Expense Details

December 31 2008

| | 2008 | 2007 |
|--------------------------------------|------------------|---------------|
| EXPENSES | 73,850.44 | 49,845 |
| RPRA Admin-General | 4,975.89 | |
| Annual Report Printing | 881.83 | |
| Bank Charges | 172.23 | |
| Directors Liability Insurance | 367.00 | |
| Membership Dues | 308.85 | |
| Miscellaneous | 39.50 | |
| Newsletter Printing | 3,206.48 | |
| RPRA Environment | 14,357.17 | |
| Contributions | 100.00 | |
| GPP to FWG | 7,875.00 | |
| GPP to Rockcliffe Park | 2,100.00 | |
| Jubilee Garden | 4,082.73 | |
| Pond Water Monitoring | 142.80 | |
| Printing | 56.64 | |
| RPRA Heritage | 15,978.70 | |
| Heritage Conservation District Guide | 1,701.00 | |
| Legal Heritage | 1,262.42 | |
| Miscellaneous | 57.75 | |
| Rockcliffe Revisited Photo Exhibit | 10,926.82 | |
| Welcome To Rockcliffe Printing | 2,030.71 | |
| RPRA Library | 7,891.40 | |
| RPRA Social | 13,974.26 | |
| BBQ | 8,811.41 | |
| Christmas Tree | 689.85 | |
| Speaker P Evening | 461.88 | |
| Speaker P Lunch | 2,749.12 | |
| Other RPRA Social Exp | 339 | |
| Children's Christmas Party | 923.00 | |
| RPRA Sports | 16,673.02 | |
| Rink Expense | 2,522.37 | |
| Soccer Expenses | 14,150.65 | |